

Specifications of PAC-K Injection Molding Machines

(Selection of Injection Unit Depends on the Product Requirements)

Model	UNIT	PAC250K				PAC350K				PAC450K			
International Size Rating	International Specification	440/2500		640/2500		840/3500		1080/3500		840/4500		2180/4500	
Injection Unit													
Screw Diameter	mm	40	45	45	50	50	55	55	60	50	55	70	
Shot Volume	cm ³	221	279	333	412	442	534	593	706	442	534	1212	
Shot Weight (PS)	g	201	254	303	375	402	486	540	643	402	486	1115	
	oz	7.1	8.96	10.7	13.2	14.1	17.1	19.1	22.7	14.1	17.1	39.3	
Injection Pressure	MPa	199.3	157.5	194.4	157.5	190.5	157.5	187.4	157.5	190.5	157.5	180.8	
Screw L: D Ratio	L/D	22:1											
Screw Stroke	mm	176		210		225		220		225		315	
Screw Speed(normal)	r/min	300											
Screw Speed(maximum)	r/min	450		450		400		400		357		220	
Clamping Unit													
Clamping Force	kN	2500				3500				4500			
Opening Stroke	mm	560				610				700			
Platen Size	mm	880x880				960x960				1105x1105			
Space Between Tie-bars	mm×mm	580x580				630x630				720x720			
Max. Daylight	mm	1160				1260				1450			
Mold Thickness (Min.-Max.)	mm	220-600				250-650				370-750			
Ejector Stroke	mm	180				180				200			
Ejector Force	kN	137				137				137			
General													
Hydraulic System Pressure	MPa	17.5				17.5				17.5			
Pump Motor	kW	55				55+33.9				55+55+55			
Heating Power	kW	11	11	11	16.5	16.5	22	22	25	16.5	22	22	25
Number of Temperature Control Zone		5				5				5			
Oil Tank Capacity	L	650				650				950			
Machine Dimensions (L×W×H)	m×m×m	6.8×1.8×2.1				6.9×1.8×2.1				8.2×2.1×2.2			
Machine Weight	Ton	11				12.5				17			

■ Note: We reserve the right to make changes or improvements of the product without prior notice.
The product photos in this catalog are for reference only.

Stock Code:300415

广东伊之密高速包装系统有限公司

GUANGDONG YIZUMI HIGH SPEED PACKAGING SYSTEM CO., LTD.

ADD: No.22, Ke Yuan 3 Road, Hi-tech Industrial Zone, Ronggui, Shunde, Foshan City, Guangdong Province, China

TEL:86-757-2926 5145 86-757-2926 2215 www.yizumi.com



Designed by Yizumi in December 2017

PAC-K



New-generation Injection Molding Machine for Fast Food Container

Thin-wall Injection Molding System Solution

YIZUMI 伊之密

About Us



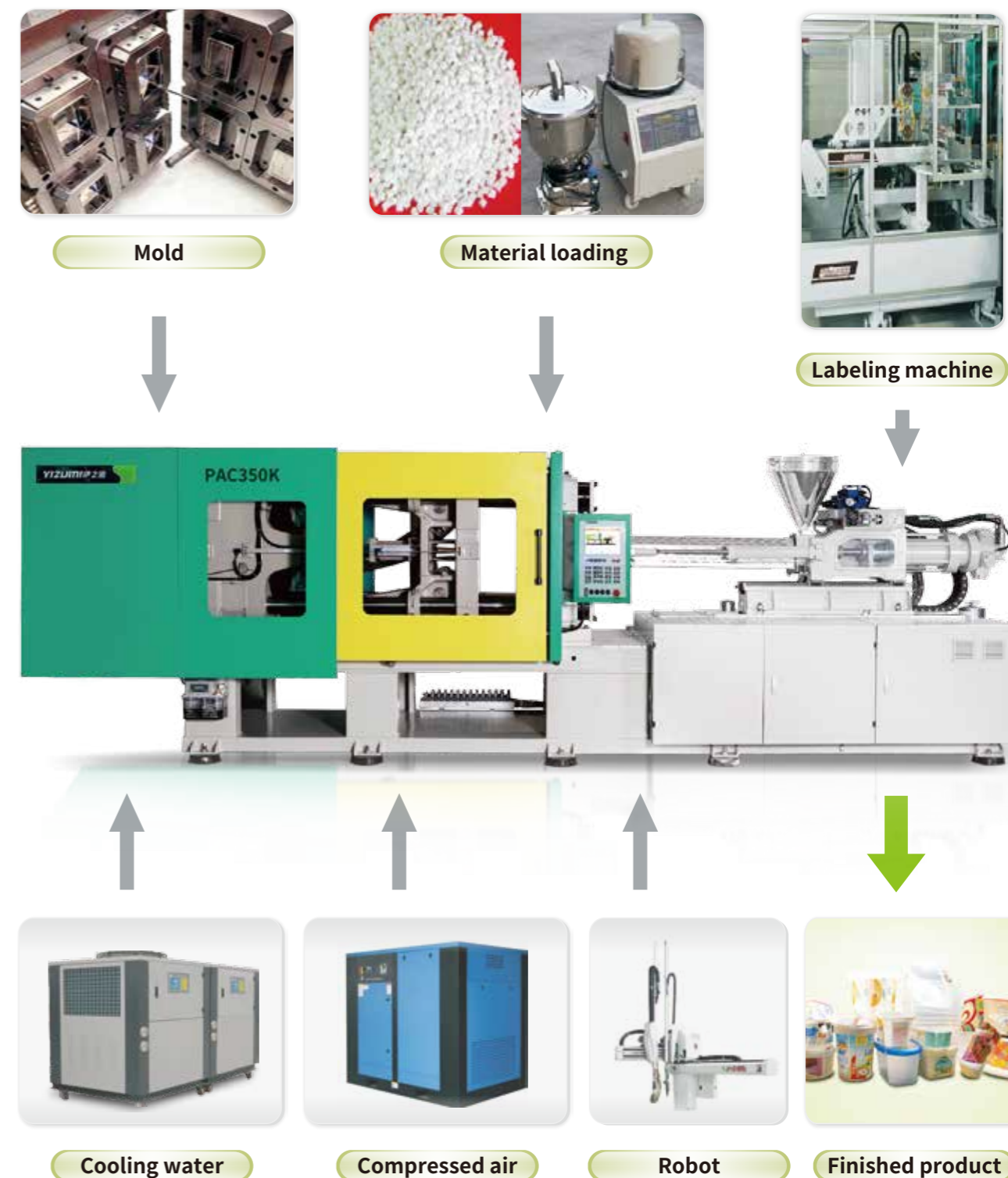
Located in National Hi-tech Industrial Zone in Shunde, Guangdong Yizumi High Speed Packaging System Company Limited is established to cope with the world's growing demands for high-speed packaging equipment. With strong financial base, large company size and elites in R&D, design, manufacturing, service and marketing, we pursue the mission of "Facilitate Chinese machine technology keeping pace with the world and provide global customers with better investment return and experience".

We, based on the ideas of "highly-efficient, precise, economical, reliable, energy-saving and environment-friendly", offer turnkey high-speed injection molding systems for different types of thin-wall plastic packaging products such as food containers, IML ice cream containers, IML buckets and IML packaging containers.

We have a team of innovative R&D elites. Through highly-efficient management, cutting-edge machining equipment, complete constant-temperature dust-free production lines, innovation, the spirit of working earnestly and years of experience in machine manufacturing, we can offer specialized thin-wall injection molding solutions.

Since establishment, we have always aimed to meet the customer needs, offer turnkey solutions for customers, serve them sincerely, create more value and provide better investment return for them. In addition, we are committed to establishing five-star service system in the industry and consistently endeavor to provide speedy and accurate services for customers worldwide and increase their competitiveness.

Processes of Thin-wall Injection Molding System



Thin Wall Injection Molding Machine

NEW PAC-K Series Injection Molding Machine
for Fast Food Container

- Higher Injection Speed
- Upgraded Control System
- Optimized Platen Design



High-precision injection control system



Durable high-rigidity clamping unit

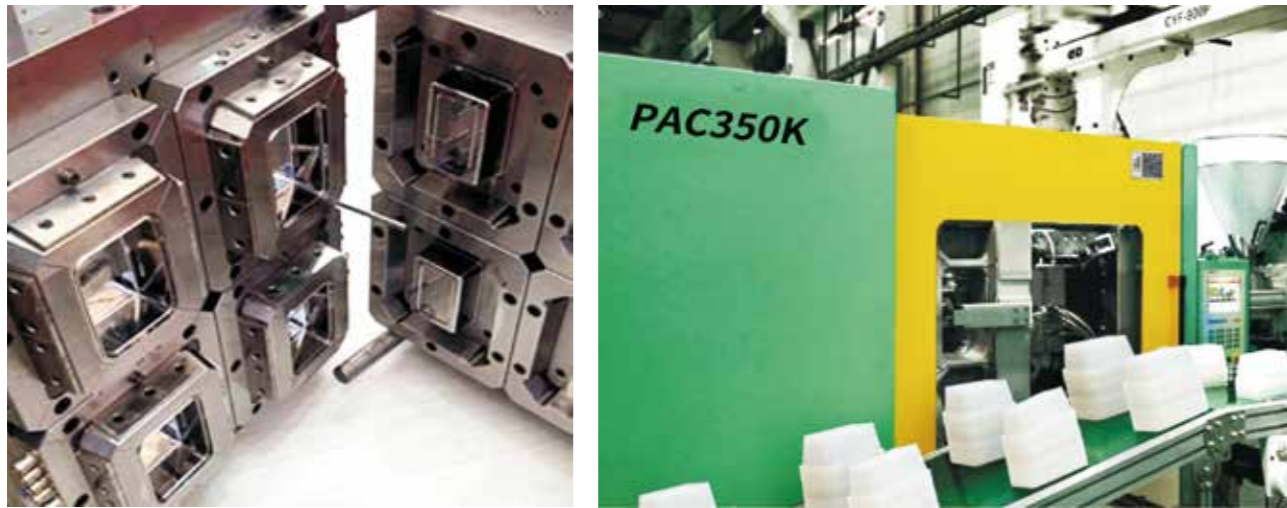


High-response hydraulic system



Single-cylinder injection system with high precision

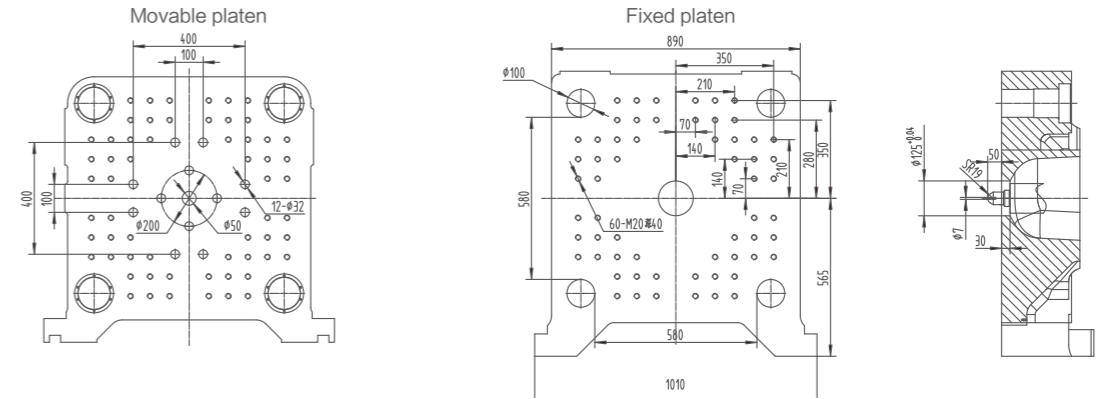
Application Example of Thin Wall Injection Molding System



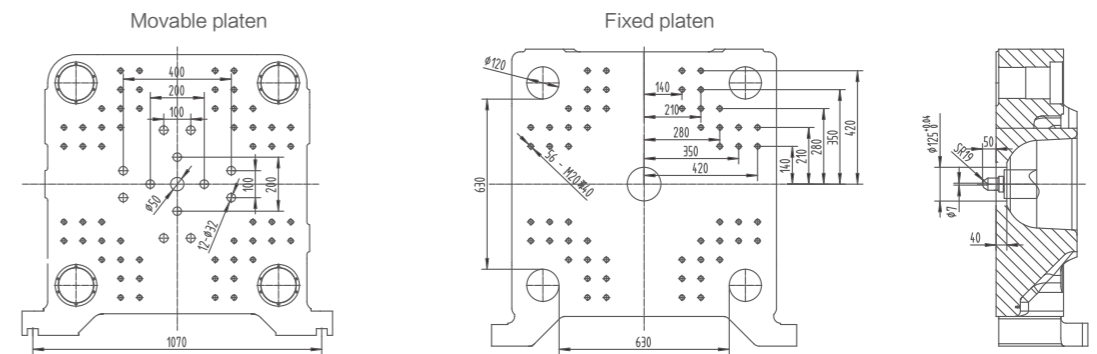
Information of molded part		Information of IMM		Information of plastic material		Information of mold	
Molded part	1000ml fast food container	Machine model	PAC350K	Plastic material	PP	Cavity number	4
Size (l×w×h)	175mm×116mm×70mm	Shot weight	579g	Melt mass /flow rate	50g/10min	Platen number	2
Unit weight	16.8g	Space between tie bars (mm×mm)	630mm×630mm	Tensile yield stress	38.6Mpa	Runner	hot runner
Wall thickness	0.38mm	Mold thickness (min.- max.)	250mm-630mm	Manufacturer	Langang Petrochemical	Size	850mm×540mm×470mm
Cycle time	5.5s	Opening stroke	610mm	Grade	H9018	Weight	1.6Tons

Actual Energy Consumption Test							
Accumulative energy consumption	EP(Wh)	Test time (s)	Part weight (g/cycle)	Output (pcs)	Weight of raw material (kg/h)	Energy consumption (kw.h)	Average energy consumption (kw.h/kg)
Σ	8.11	1200	67.2	2313	38.8	24.33	0.627

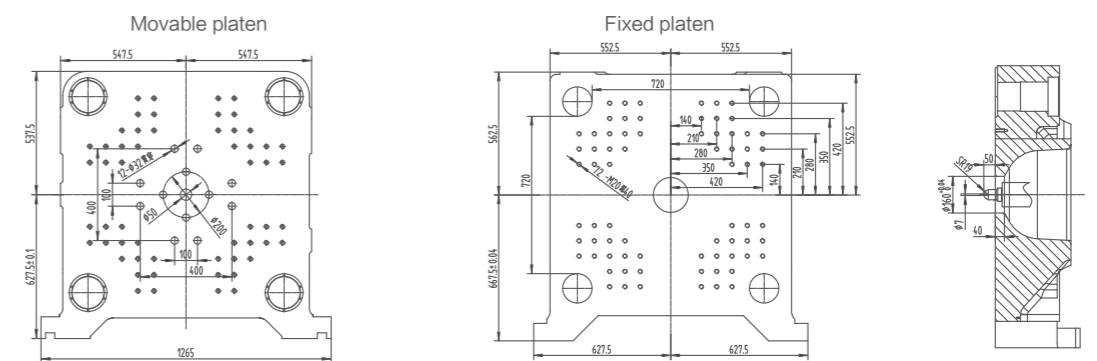
Platen Dimension Drawings



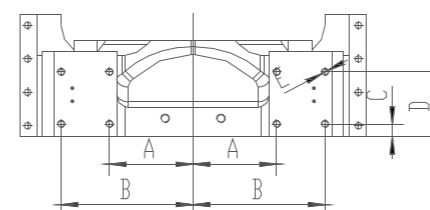
PAC250K



PAC350K



PAC450K



Robot Mounting Holes in the Fixed Platen

	A	B	C	D	E
PAC250K	280	380	35	175	M20 ↓ 40
PAC350K	300	420	35	175	M20 ↓ 40
PAC450K	350	490	35	175	M20 ↓ 40